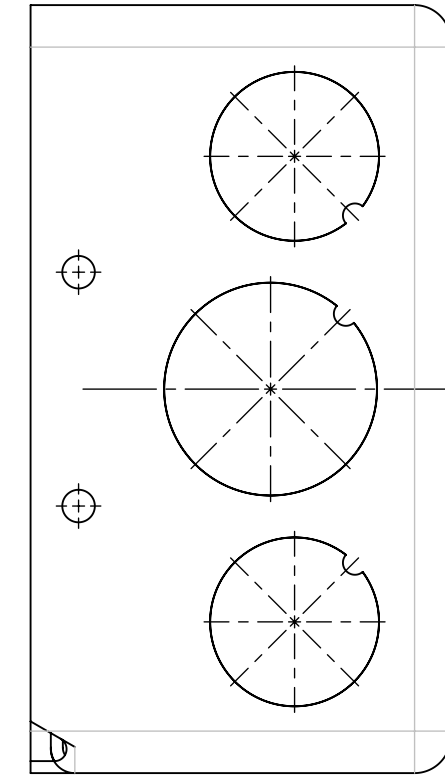
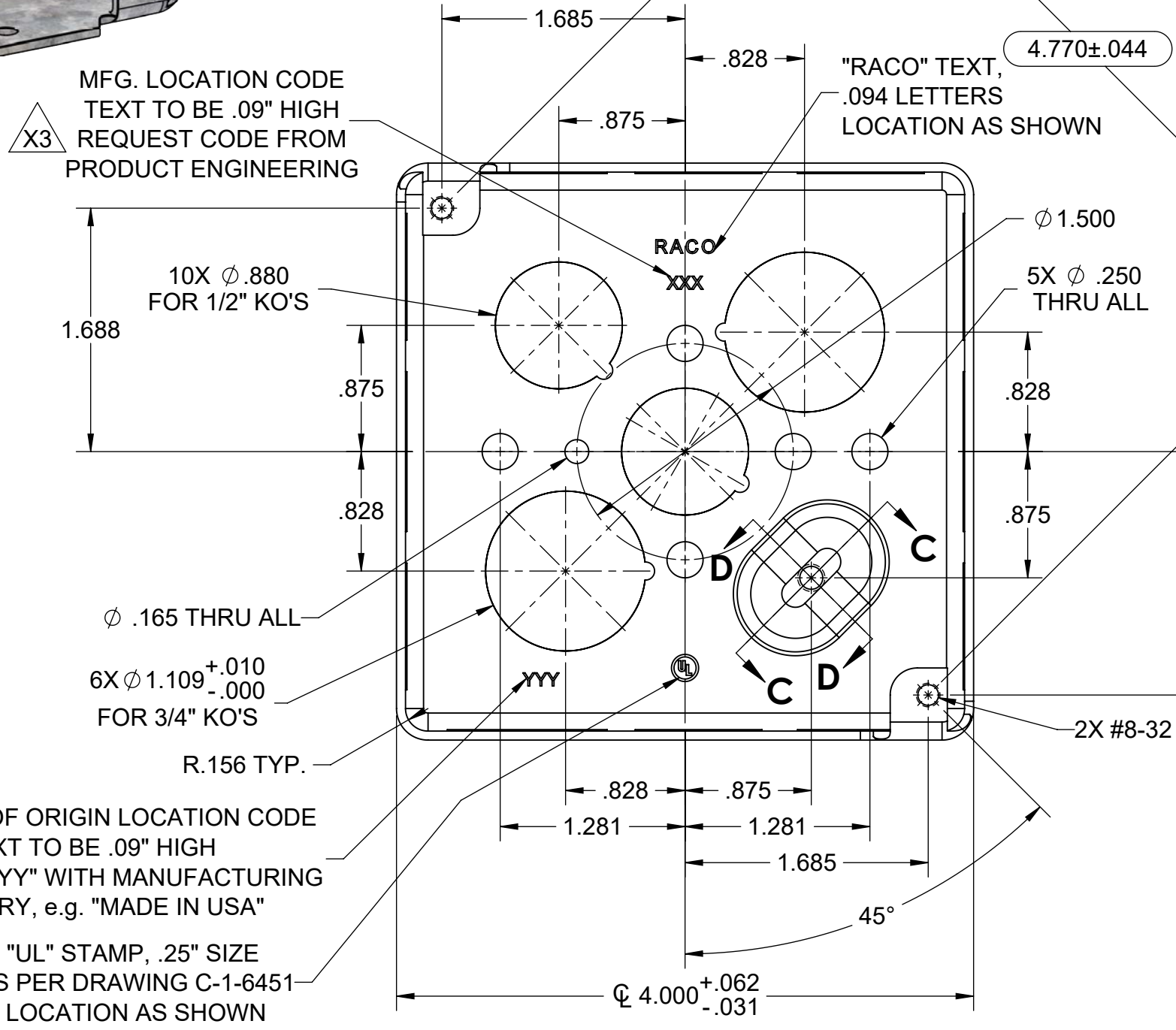
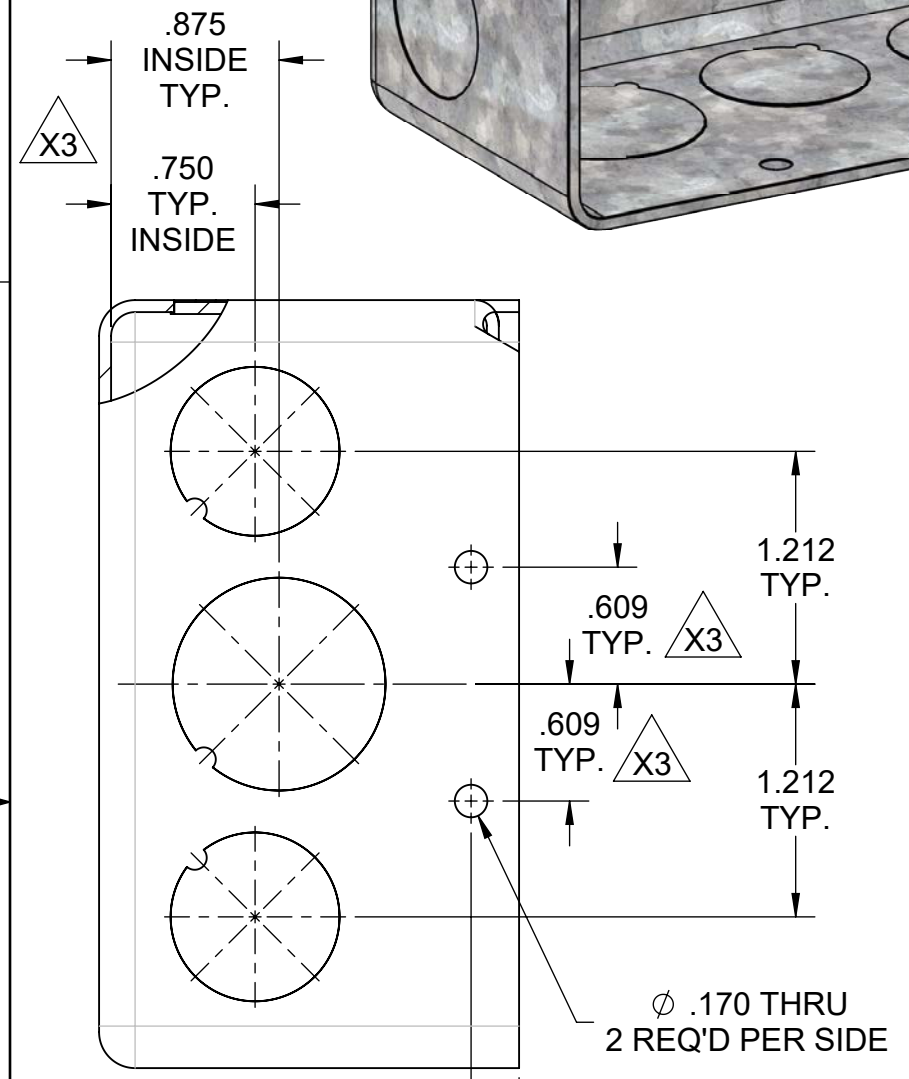
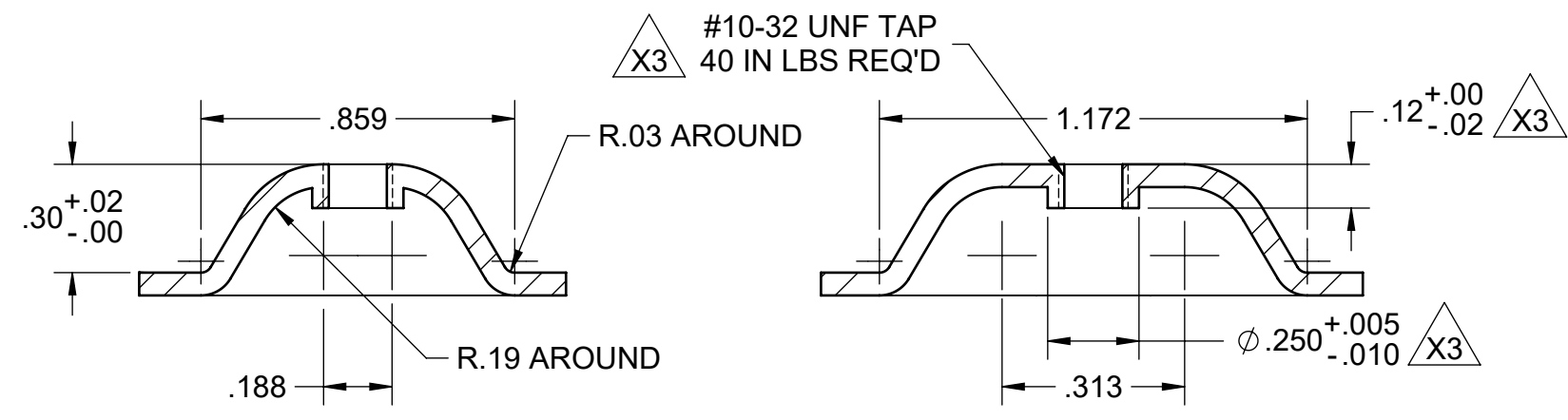
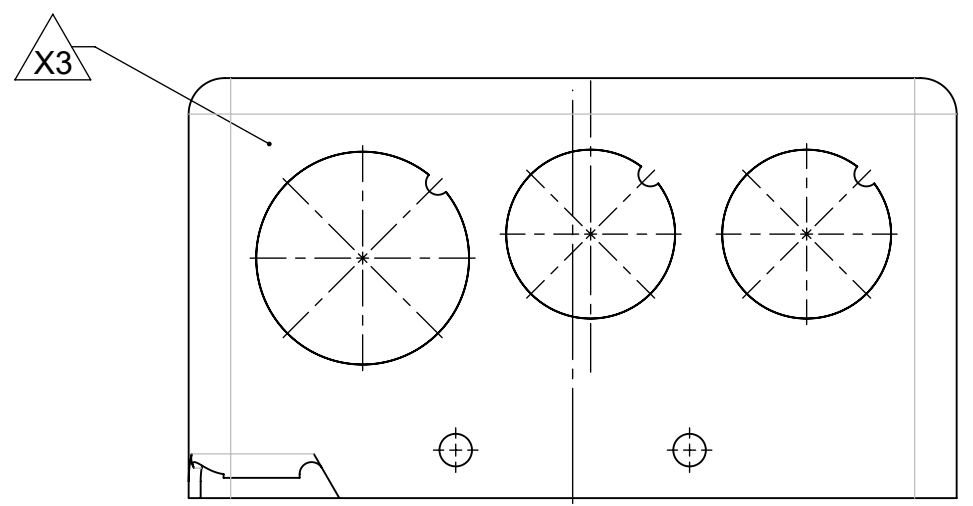
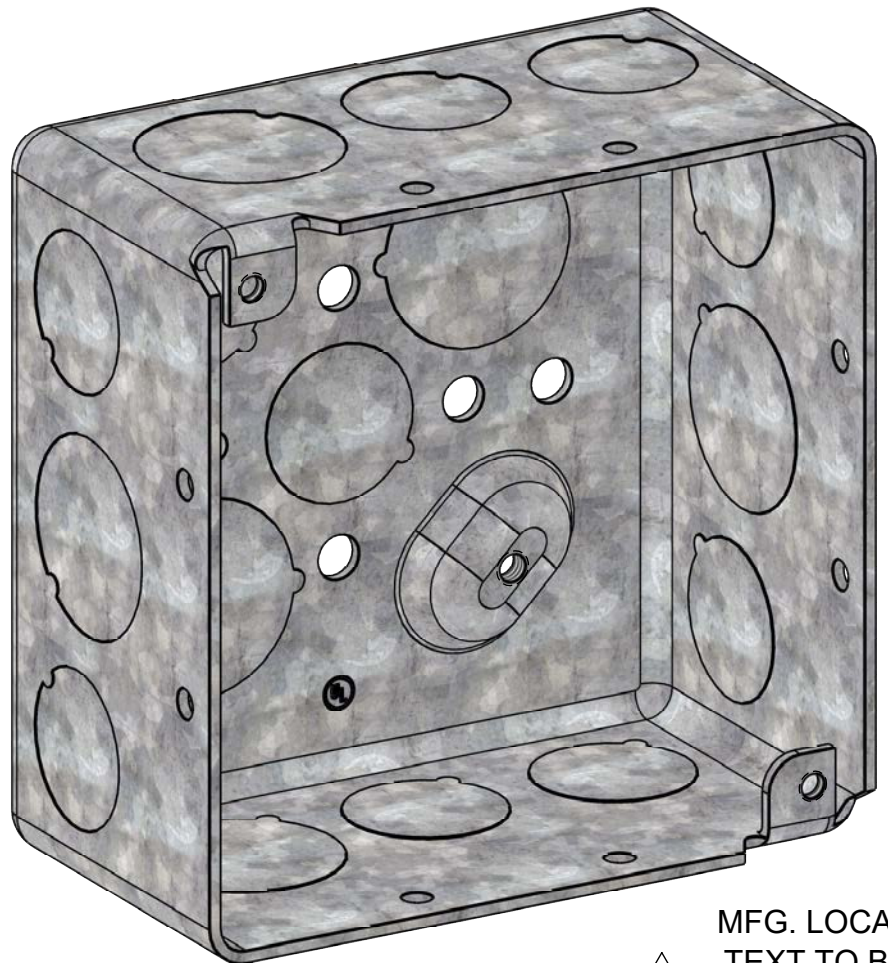
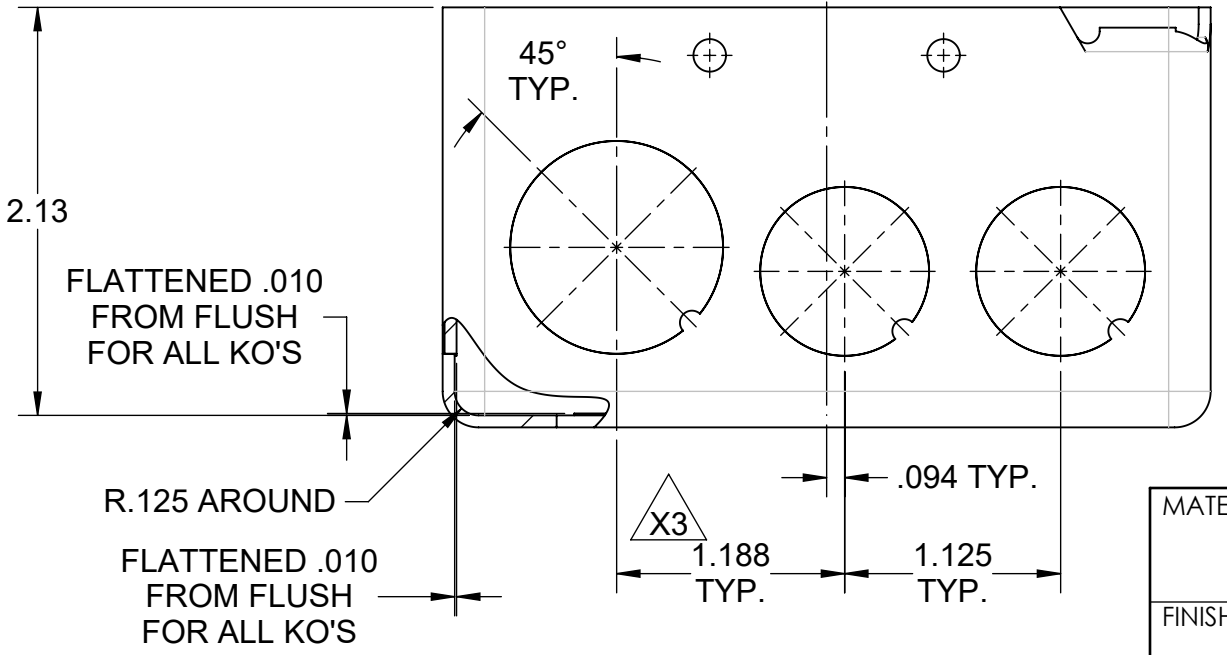
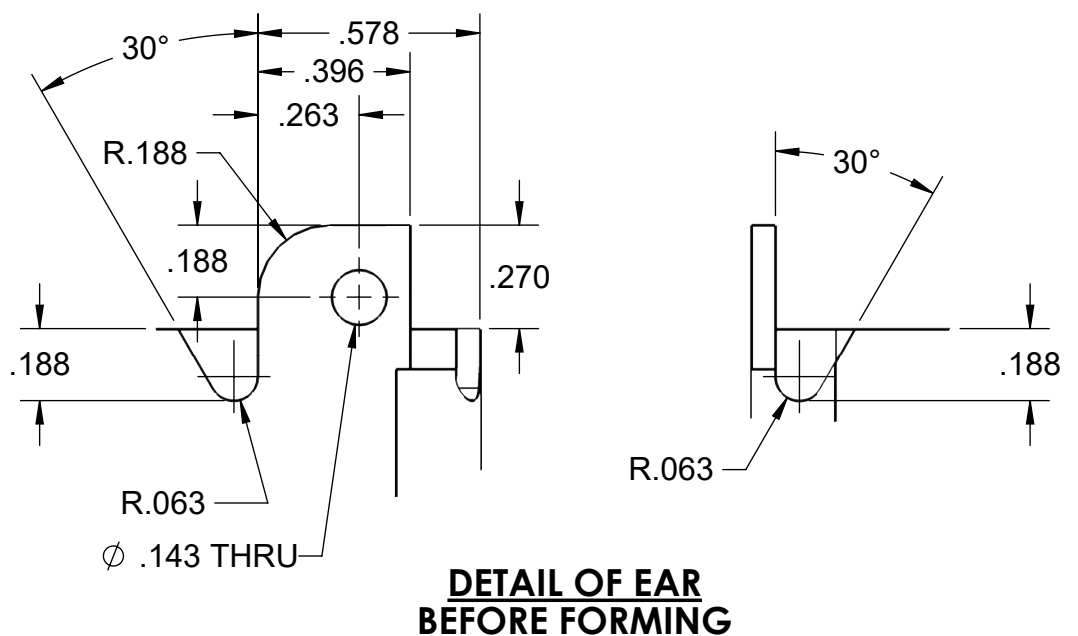


REVISIONS				
REV.	ECN	DATE	DESCRIPTION	BY
X1	-	03-01-23	RELEASED FOR QUOTATION ONLY	RMV
X2	-	04-20-23	CHG'D EAR DETAIL, CHG'D PART DESCRIPTION	RMV
X3	-	04-21-23	ADDED EXTRUSION TO GROUND BUMP, CHANGES TO NAIL HOLE LOCATIONS, KO ARRANGEMENT, AND STAMPS	RMV



COUNTRY OF ORIGIN LOCATION CODE TEXT TO BE .09" HIGH REPLACE "YYY" WITH MANUFACTURING COUNTRY, e.g. "MADE IN USA"

"UL" STAMP, .25" SIZE AS PER DRAWING C-1-6451 LOCATION AS SHOWN



- NOTES:
- ALL KNOCKOUTS MUST COMPLY TO UL STANDARD 514A SECTION 12.6 & 12.7 REQUIREMENTS
  - ALL KO'S TO BE FLATTENED TO .010" FROM FLUSH

MATERIAL: .0625 MIN. GALV. STEEL		<b>RACO</b>		TITLE: 4" SQ. OUTLET BOX, 2-1/8" DEEP, 1/2"-3/4" KO'S	
FINISH: ZINC PLATING .0005 MIN. ZINC OUTSIDE .00015 MIN. ZINC INSIDE		BY: RMV	DATE: 03-01-23	PART NO.: 202443	
THIS DRAWING IS THE PROPERTY OF RACO, AND CONTAINS PROPRIETARY AND CONFIDENTIAL INFORMATION WHICH MUST NOT BE REPRODUCED, USED, OR DISCLOSED OTHER THAN AS EXPRESSLY AUTHORIZED BY RACO.		UNLESS OTHERWISE SPECIFIED DIMENSIONS ARE IN INCHES TOLERANCES: .XX DECIMAL ±.015 .XXX DECIMAL ±.005 ANGLE ±1°		SIZE: DRAWING NO.:	REV:
		C C-2-19621		X3	
SCALE: 1:1				SHEET 1 OF 1	